

Pricelist 25/04/2012

Program (software): (actual version 10.1a)

SOFTLOK demo version	Free from Internet
SOFTLOK demo version (incl. manual * at USB-stick)	€ 12,50
SOFTLOK mini version (incl. manual * at Diskette)	€ 75,00
SOFTLOK mini version (incl. manual * at USB-stick)	€ 85,00
SOFTLOK max version (incl. Manual * at USB-stick)	€ 250,00
SOFTLOK update (from version 10)	€ 20,00
SOFTLOK update (from version 9.1)	€ 70,00
SOFTLOK update (from version 9.0)	€ 90,00
SOFTLOK update (from version 8.75)	€ 100,00
SOFTLOK update (from version 8.5)	€ 110,00
SOFTLOK update (from version 8.0 and older).....	€ 120,00
SOFTLOK manual (CD-Rom).....	€ 10,00
SOFTLOK manual (USB-stick)	€ 12,50
SOFTLOK update on USB-stick instead diskette	+ € 10,00
MFX programmer tool (for PCCC)	€ 15,00

* manual is short variant from Dutch original version

Cable PC ⇔ Digital interface

Märklin, Arnold, FMZ, Trix, Lenz and Intellibox

(9-pin ~ 2,5 meter) € 25,00

Cable PC ⇔ PC (SOFTLOK V10)

Data exchange with 2 **SOFTLOK** PCs (Master/Slave)
2x 9-pin (female connector) ~ 4 meter

€ 25,00

NEW

Wireless connection between PC ⇔ PC (**SOFTLOK V10**)
Set of 2 adapters (range of 300 meter)on request

NEW

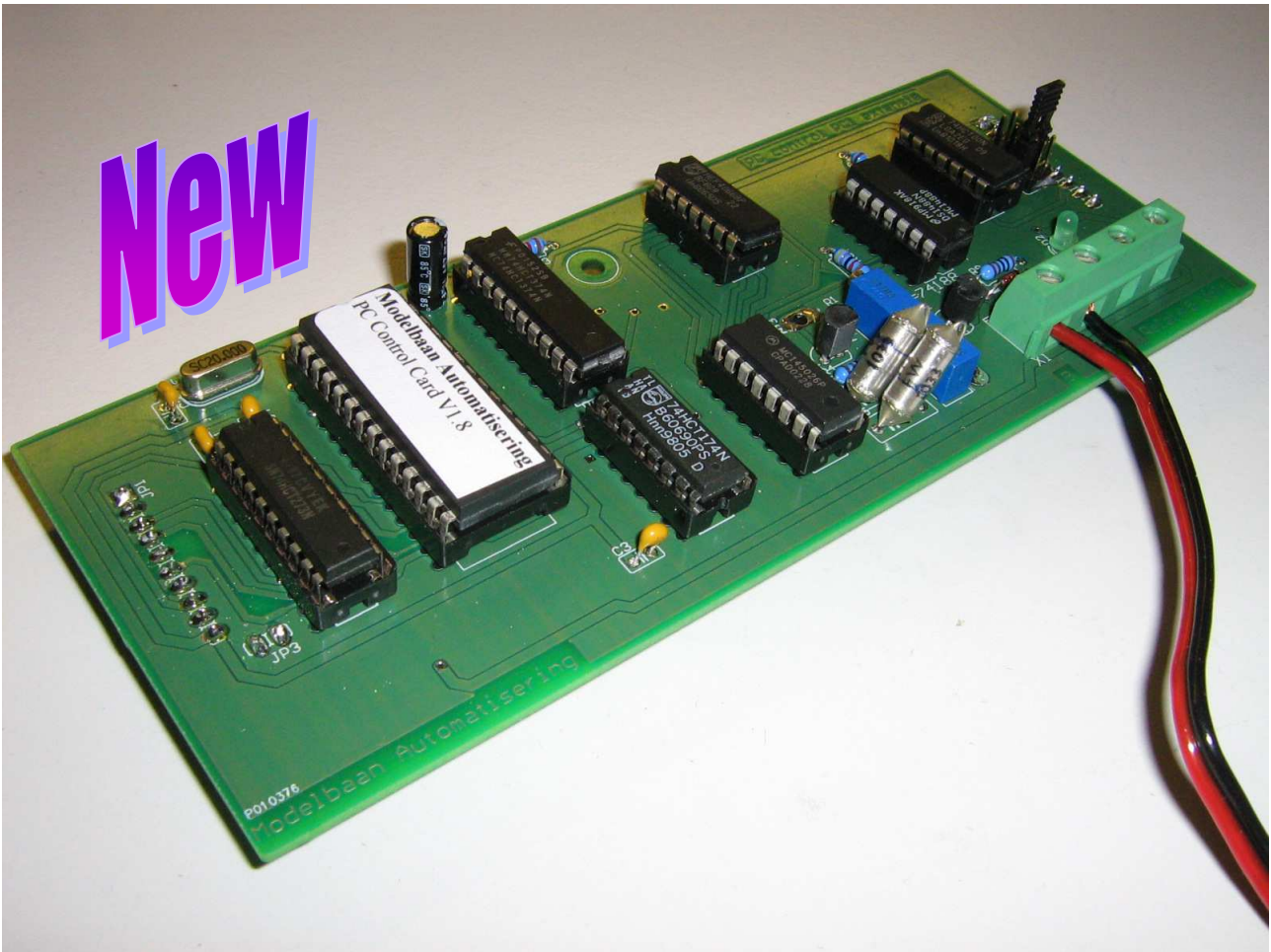
Ethernet connection between PC ⇔ PC (**SOFTLOK V10**)
Set of 2 adapters (for long distance > 10 meter)on request

PC- Control Card (MOTOROLA- FORMAT) € 99,00

- with **SOFT-** LOK demo software en standard cable
(also use full for a second Digital System, with all other Digital systems,
programming MFX decoders)



PC Control PCI Extension Card € 89,-



This new extension board replaced the old PC Control Card (ISA).

The board must be connected directly to PCI I/O Card 96.

Specifications:

Only Motorola I

Connections for external Booster and relays

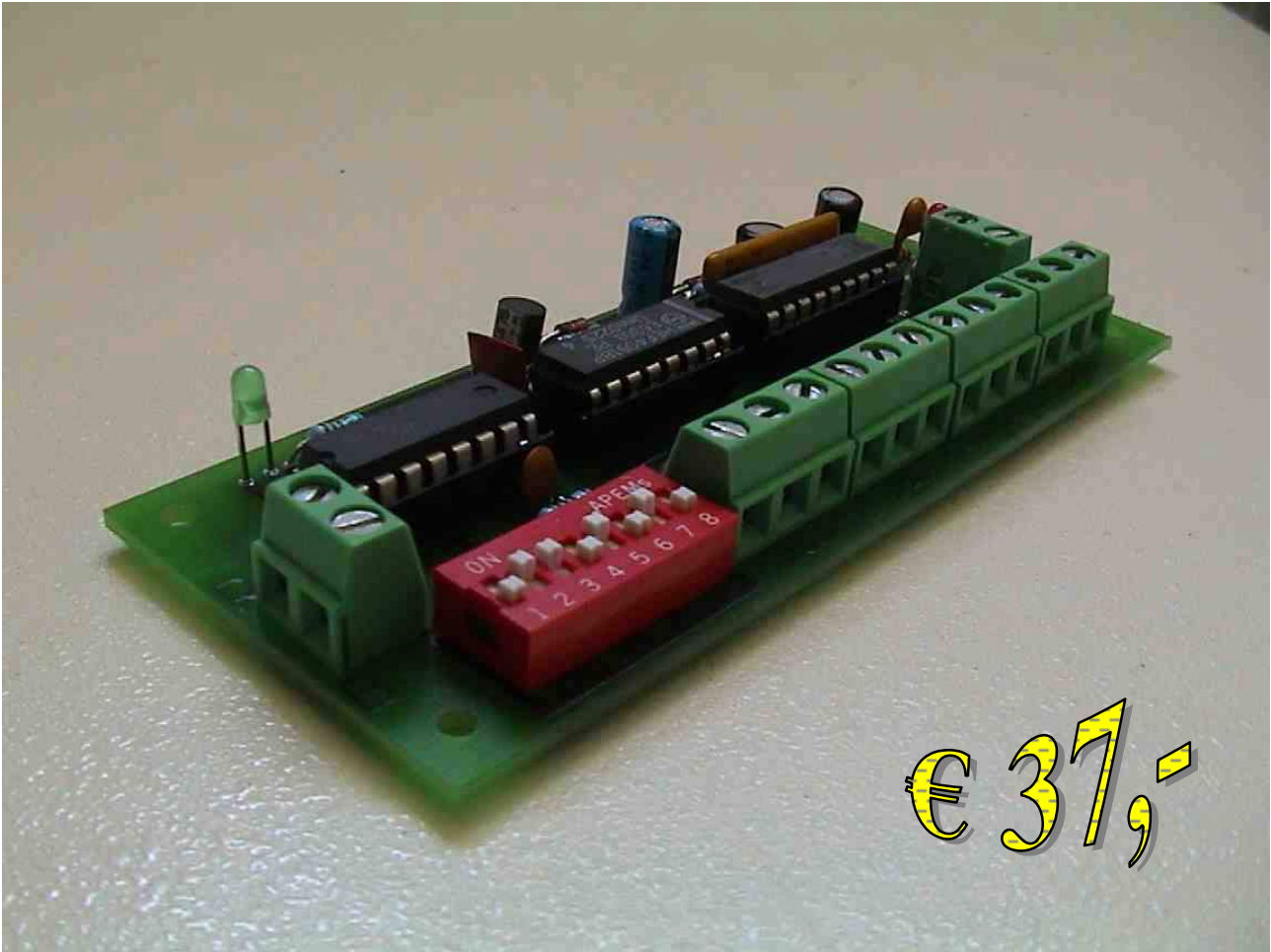
(very useful as second Digital system to control Points/ signals)

[Multi decoder for point/ function and more lights control MD-4](#). € 57,00



- Switch time to control coils is adjustable (0.2 / 2.0 / 4.0 seconds), hence independent of the control (keyboard or software)
- 4-colour light signals (signal-pictures) are controlled by one function-output (according to Dutch, German, Belgium/ Luxembourg, Swiss and Austrian standards; others on application)
- Adjustable for level crossing (flashing light)
- Decoder can be used as function decoder too (F1...F4)
- Outputs are protected against overloading
- Checking of correct address codes
- Easily to jumper
- Suitable for external power supply (=)
- Watchdog function (apply a relay, not included)

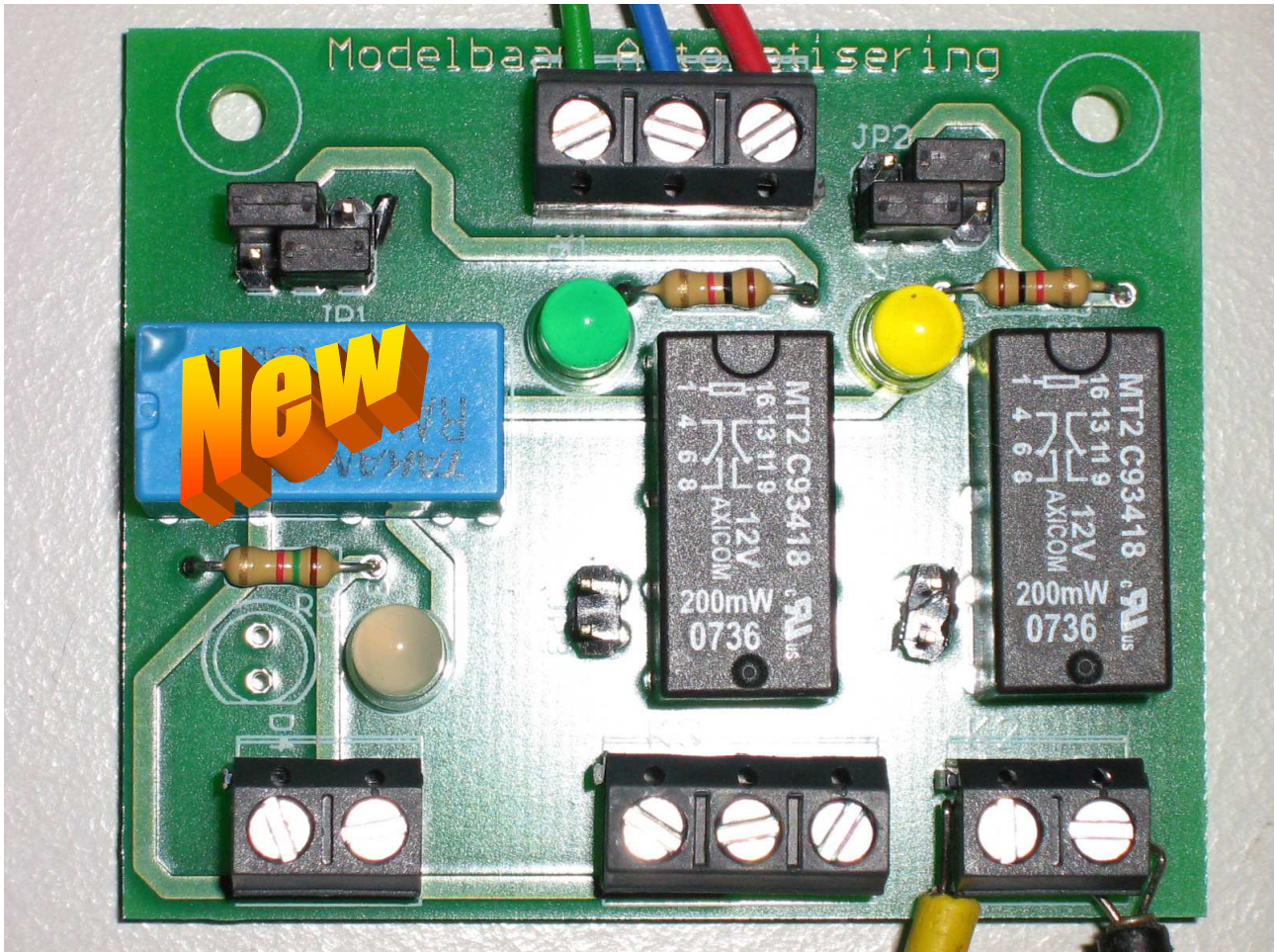
Point decoder **WD-4**..... € 37,00



€ 37,-

- With auto switch off
- Outputs are protected against overloading
- Easy to connect

Universal relais Extention **URE**..... € 25,-



- Galvanic separation between decoder and Point
- Suitable for 2 and 3 wire point control
- Also for analog control
- Easy connection
- Visual input/output (led)
- Output control pulse as well continue

Connecting Rail contacts "direct" to your PC:

At this moment there is only one type of PC Feedback card:

- I/O card suitable for PCI-slot

The card is suitable for reading of 192 inputs (feedback)



Picture of an I/O card (192) with PCI-slot

In combination of the STM-8 (current detection), you will get best way of feedback, other solutions are rail switches, reed contacts etc via an optocoupler card. (see also [track occupation](#))

With this hardware the feedback works faster and reliable. The Digital system will sending only the commands for locos and point/signals. In this way the digital system works faster too.

The FLEISCHMANN FMZ- system has no possibility to connect a feedback system, so you need this extra hardware feedback system.



Complete I/O set:

- PC I/O card **PCI**
- Flatcable (1...4)
- Adapter card (1...4)
- Current detection card STM-8 (6...24)

"Current detection set" complete for 48 inputs.....€ 329,-
(This set can be connected (1...4) to one PC I/O card)



Picture of a set for 48 inputs (feedback) with current detection

- Flatcable 2 meter (1)
- Adapter card (1)
- Current detection card STM-8 (6)

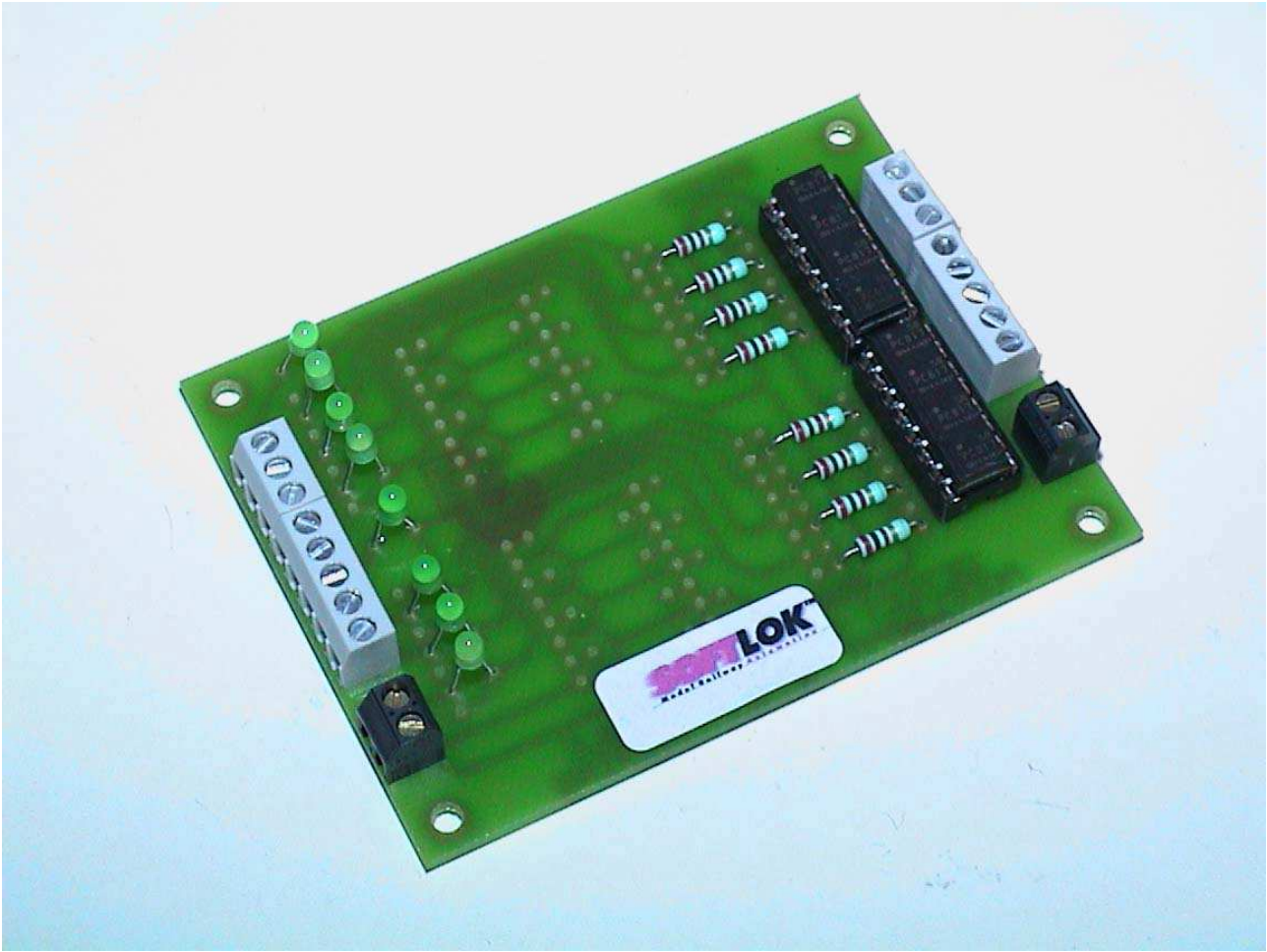
PC I/ O card (PCI card with 96 I/ O lines)..... € 230,00

I/ O card (extension card for PCI card with 96 I/ O lines) € 75,00

Adapter for connecting of 6* **STM- 8**..... € 27,50

Current detection **STM- 8** built and checked..... € 55,00
 8 inputs for feedback based for current detection and electrical separation

Opto Card **OPTO- 8** built and checked € 30,00
 8 inputs for feedback and electrical separation with LED indication
 This card is similar with the STM-8, but works with rail contacts or reed contacts, etc...



Flat cable, 2 meter. connection PC I/ O (192) <=> Adapter € 27,50
Flat cable extension per meter.....€ 5,00

Booster (MÄRKLIN ~/= / ARNOLD / LENZ / PC- CONTROL CARD/ UHLENBROCK)

With this kind of booster you get a very stable power supply unless how many trains are riding.

The common booster has not this quality.

Besides the output is adjustable between 10...21 Volt (power-12).

The Power-12 has 6 secured outputs.

Booster (Power-12) € 495,00

Booster module (Power-2) € 75,00

Transformer for Power-2 (52VA) € 35,00

NEW

RS232 PCI card (2 port) € 45,00

Extension card for PCs without or too less RS232 connections

SOFTLOK will communicate with high speed (19K2 and higher) with your digital system (e.g. with the new interface of LENZ or with the IB/ Twincenter

Modelbaan Automatisering Irene Vorrinkstraat 61 4105 JA Culemborg
The Netherlands

☎ **+31345 - 536466**

Postbank account: 1799166 att. R. Taconis Number of chamber of
commerce. 34091682 Tiel

BIC: INGBNL2A

IBAN: NL76INGB0001799166

Internet: www.softlok.nl

E-mail: rotac@softlok.nl

All mentioned prices are Euros including Dutch VAT excluding postage.

All foregoing pricelist are expire. Price changes reserved.

Order information: ordering outside of Europe is possible with VISA card

For security reasons, sent your credit card data only by fax or standard mail.